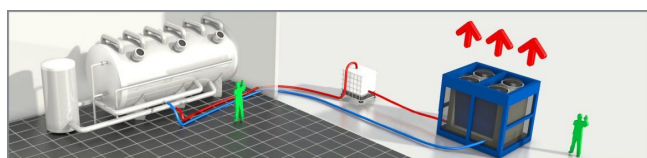




Chiller CZ30i

Air-cooled chiller with 300 kW cooling capacity. This low-energy low-noise machine is ready for use and inverter driven. The machine is mounted in a robust frame with a shock-resistant grid for condenser protection and can be moved easily with a forklift or crane.



Standard accessories CZ30i



Robust frame



M12 bolt connection



Water connection



Inverter

Technical specifications CZ30i

| | |
|-------------------------------|---------------------|
| Cooling capacity ¹ | 306 kW |
| Power consumption | 109 kW |
| Current (nominal) | 184 A |
| Power connection | M12 bolt connection |
| Voltage | 400 V |
| Recommended Fuses | 250 A |
| Phases | 3 + E |
| Internal pump | No |
| Water connection | 4? Bauer |
| Maximum working pressure | 10 bar |
| Nominal pressure drop | 25.2 kPa |
| Length | 3530 mm |
| Width | 2450 mm |
| Height | 2700 mm |
| Weight | 4000 kg |
| Sound level (at 10 m) | 56 dB(A) |

¹ Conform specifications (cooling: water 12 °C/7 °C, air 35 °C)

Optional accessories CZ30i



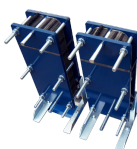
SMS alarm



Water supply connection



Pumps



Heat exchanger



Extension power cables



Water hoses



Buffertank



Diesel power generator