

## Chiller CH02

Air-cooled chiller with 25 kW cooling capacity, complete with internal water pump and buffer tank. This low-energy low-noise machine is ready for use. The machine is mounted in a robust frame with a shock-resistant grid for condenser protection and can be moved easily with a forklift or crane.

### Standard accessories CH02



Robust frame



Water connection



Electrical power connection (A)

### Optional accessories CH02



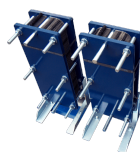
SMS alarm



Water supply connection



Pumps



Heat exchanger



Extension power cables



Water hoses



Buffertank



Water filters



3-way valve



Diesel power generator

### Technical specifications CH02

Cooling capacity <sup>1</sup>	26.5 kW
Power consumption	11.5 kW
Current (nominal)	21.9 A
Power connection	32 A CEE
Voltage	400 V
Recommended fuses	32 A
Phases	3 + N + E
Internal pump	Yes
Water connection	2" Bauer
Maximum working pressure	4 bar
Length	1550 mm
Width	1090 mm
Height	1630 mm
Weight	660 kg
Sound level (at 10 m)	47 dB(A)

<sup>1</sup> Conform specifications (cooling: water 12 °C/7 °C, air 35 °C)