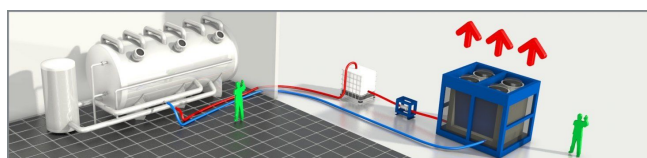




Chiller CZ33

Air-cooled chiller with 330 kW cooling capacity. This low-energy low-noise machine is ready for use. The machine is mounted in a robust frame with a shock-resistant grid for condenser protection and can be moved easily with a forklift or crane.



Standard accessories CZ33



Robust frame



M12 bolt connection



Water connection

Optional accessories CZ33



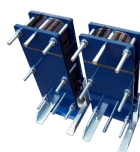
SMS alarm



Water supply connection



Pumps



Heat exchanger



Extension power cables



Water hoses



Buffertank



Diesel power generator

Technical specifications CZ33

Cooling capacity ¹	330 kW
Power consumption	129 kW
Current (nominal)	219 A
Power connection	M12 bolt connection
Recommended Fuses	315 A
Phases	3 + E
Internal pump	No
Water connection	4? Bauer
Maximum working pressure	10 bar
Nominal pressure drop	49.1 kPa
Length	5000 mm
Width	2500 mm
Height	2600 mm
Weight	5180 kg
Sound level (at 10 m)	62.5 dB(A)

¹ Conform specifications (cooling: water 12 °C/7 °C, air 35 °C)