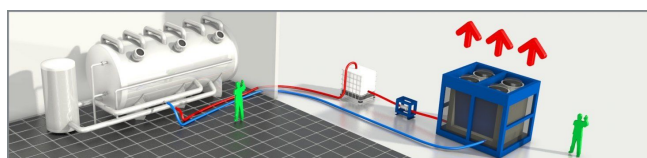


Low Temp Chiller CZ30LT

Air-cooled low temperature chiller with 300 kW cooling capacity. This low-energy low-noise machine is ready for use. The low temp chiller is mounted in a robust frame with a shock-resistant grid for condenser protection and can be moved easily with a forklift or crane.



Standard accessories CZ30LT



Robust frame



M12 bolt connection



Water connection

Optional accessories CZ30LT



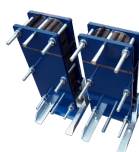
SMS alarm



Water supply connection



Pumps



Heat exchanger



Extension power cables



Water hoses



Buffertank



3-way valve



Diesel power generator

Technical specifications CZ30LT

Cooling capacity ¹	240 kW
Power consumption	129 kW
Current (nominal)	00 h A
Power connection	M12 bolt connection
Voltage	400 V
Recommended Fuses	400 A
Phases	3 + E
Internal pump	No
Water connection	4? Bauer
Maximum working pressure	6 bar
Nominal pressure drop	64.9 kPa
Length	5920 mm
Width	2400 mm
Height	2550 mm
Weight	6290 kg
Sound level (at 10 m)	74 dB(A)

¹ Conform specifications (cooling: water 12 °C/7 °C, air 35 °C)