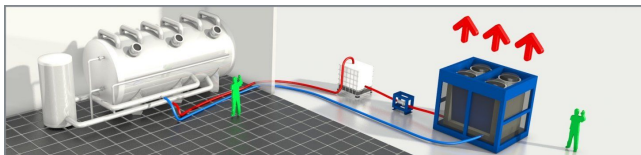




Chiller CZ20H

Chiller / Air-cooled Heat pump with 200kW Cooling capacity and 218 kW Heating capacity. This low-energy lownoise machine is ready for use. The machine is mounted in a robust frame with a shock-resistant grid for condenser protection and can be moved easily with a forklift or crane.



Standard accessories CZ20H



Robust frame



M12 bolt connection



Water connection

Optional accessories CZ20H



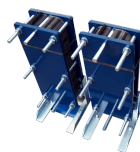
SMS alarm



Water supply connection



Pumps



Heat exchanger



Extention power cables



Water hoses



Buffertank



Diesel power generator



Technical specifications CZ20H

Cooling capacity ¹	200 kW
Heating capacity ²	218 kW
Power consumption	72.5 kW
Current (nominal)	116 A
Power connection	M10 bolt connection
Voltage	400 V
Recommended Fuses	200 A
Phases	3 + E
Internal pump	Yes
Water connection	2? Bauer
Maximum working pressure	10 bar
Nominal pressure drop	50 kPa
Length	3200 mm
Width	2500 mm
Height	2600 mm
Weight	3140 kg
Sound level (at 10 m)	60 dB(A)

¹ According to specifications (cooling: water 12 °C/7 °C, air 35 °C)

² According to specifications (heating: water 40 °C/45 °C, air 7 °C 87% RV)