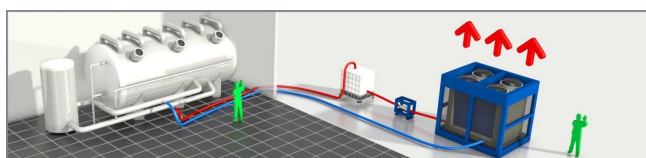




Chiller CZ20D

Air-cooled chiller with 200 kW cooling capacity. This low-energy low-noise machine is ready for use. The machine is mounted in a robust frame with a shock-resistant grid for condenser protection and can be moved easily with a fork-lift or crane.



Standard accessories CZ20D



Robust frame



M12 bolt connection



Water connection

Optional accessories CZ20D



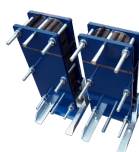
SMS alarm



Water supply connection



Pumps



Heat exchanger



Extension power cables



Water hoses



Buffertank



3-way valve



Diesel power generator

Technical specifications CZ20D

Cooling capacity ¹	199 kW
Power consumption	78.1 kW
Current (nominal)	141 A
Power connection	M12 bolt connection
Voltage	400 V
Recommended fuses	200 A
Phases	3 + E
Internal pump	No
Water connection	2? Bauer
Maximum working pressure	10 bar
Nominal pressure drop	31 kPa
Length	5000 mm
Width	2300 mm
Height	2600 mm
Weight	3538 kg
Sound level (at 10 m)	56 dB(A)

¹ Conform specifications (cooling: water 12 °C/7 °C, air 35 °C)