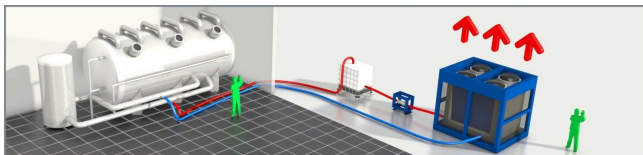




Chiller CZ17

Air-cooled chiller with 240 kW cooling capacity, complete with internal water pump and buffer tank. This low-energy low-noise machine is ready for use. The machine is mounted in a robust frame with a shock-resistant grid for condenser protection and can be moved easily with a forklift or crane.



Standard accessories CZ17



Robust frame



M12 bolt connection



Water connection

Optional accessories CZ17



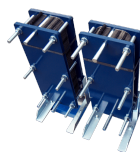
SMS alarm



Water supply connection



Pumps



Heat exchanger



Extension power cables



Water hoses



Buffertank



Diesel power generator

Technical specifications CZ17

Cooling capacity ¹	170 kW
Power consumption	64.9 kW
Current (nominal)	109 A
Power connection	M10 bolt connection
Voltage	400 V
Recommended fuses	160 A
Phases	3 + E
Internal pump	No
Water connection	4? Bauer
Maximum working pressure	10 bar
Nominal pressure drop	24.8 kPa
Length	4500 mm
Width	1170 mm
Height	2520 mm
Weight	2575 kg
Sound level (at 10 m)	59.5 dB(A)

¹ Conform specifications (cooling: water 12 °C/7 °C, air 35 °C)