

Chiller CZ12H

Chiller / Air-cooled Heat pump with 125 kW Cooling capacity and 144 kW Heating capacity. This low-energy low-noise machine is ready for use. The machine is mounted in a robust frame with a shock-resistant grid for condensor protection and can be moved easily with a forklift or crane.

Standard accessories CZ12H



Robust frame



Water connection

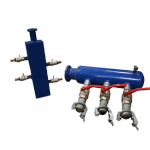


Electrical power connection (A)

Optional accessories CZ12H



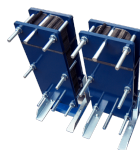
SMS alarm



Water supply connection



Pumps



Heat exchanger



Extension power cables



Water hoses



Buffertank



Diesel power generator



Technical specifications CZ12H

Cooling capacity ¹	125 kW
Heating capacity ²	144 kW
Power consumption	41.9 kW
Current (nominal)	70 A
Power connection	125 A CEE
Voltage	400 V
Recommended Fuses	125 A
Phases	3 + E
Internal pump	Yes
Water connection	2? Bauer
Maximum working pressure	10 bar
Nominal pressure drop	44 kPa
Length	3200 mm
Width	2500 mm
Height	2600 mm
Weight	2720 kg
Sound level (at 10 m)	57 dB(A)

¹ According to specifications (cooling: water 12 °C/7 °C, air 35 °C)

² According to specifications (heating: water 40 °C/45 °C, air 7 °C 87% RV)