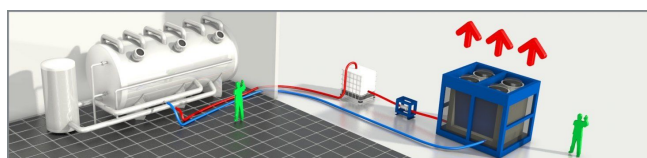




Chiller CZ10D

Air-cooled chiller with 100 kW cooling capacity. This low-energy low-noise machine is ready for use. The machine is mounted in a robust frame with a shock-resistant grid for condenser protection and can be moved easily with a fork-lift or crane.



Standard accessories CZ10D



Robust frame



Water connection

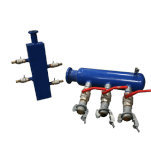


Electrical power connection (A)

Optional accessories CZ10D



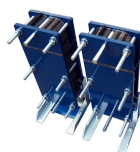
SMS alarm



Water supply connection



Pumps



Heat exchanger



Extension power cables



Water hoses



Buffertank



3-way valve



Diesel power generator

Technical specifications CZ10D

Cooling capacity ¹	111 kW
Power consumption	41.9 kW
Current (nominal)	76 A
Power connection	125 A CEE
Voltage	400 V
Recommended fuses	125 A
Phases	3 + E
Internal pump	No
Water connection	2? Bauer
Maximum working pressure	10 bar
Nominal pressure drop	50 kPa
Length	3000 mm
Width	2500 mm
Height	2600 mm
Weight	2415 kg
Sound level (at 10 m)	49 dB(A)

¹ Conform specifications (cooling: water 12 °C/7 °C, air 35 °C)