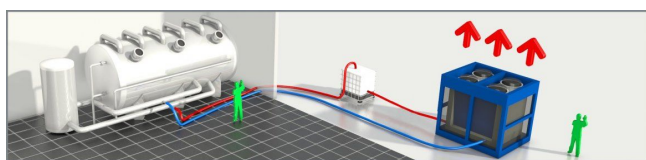




Chiller CZ06

Air-cooled chiller with a cooling capacity of 60 kW, fitted with an internal HD water pump. The machine is fully inverter-controlled and has a range from 25 to 120% (14.8 kW to 59.3 kW respectively) with an ESEER value of 4.12! The machine is fitted in a solid frame with condenser protection in the form of an impact-resistant grid, and can be easily moved by forklift truck or crane.



Standard accessories CZ06



Robust frame

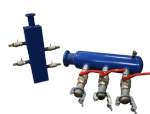


Water connection



Electrical power connection (A)

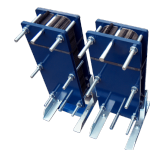
Optional accessories CZ06



Water supply connection



Pumps



Heat exchanger



Extension power cables



Water hoses



Buffertank



Diesel power generator



Technical specifications CZ06

Cooling capacity ¹	59.3 kW
Power consumption	28.1 kW
Current (nominal)	40 A
Power connection	63 A CEE
Voltage	400 V
Recommended Fuses	63 A
Phases	3 + N + E
Internal pump	Yes
Water connection	2? Bauer
Maximum working pressure	6 bar
Nominal pressure drop	71 kPa
Length	2800 mm
Width	1250 mm
Height	2000 mm
Weight	1230 kg
Sound level (at 10 m)	49 dB(A)

¹ Conform specifications (cooling: water 12°C / 7°C, air 35°C) Max. power at 120%